

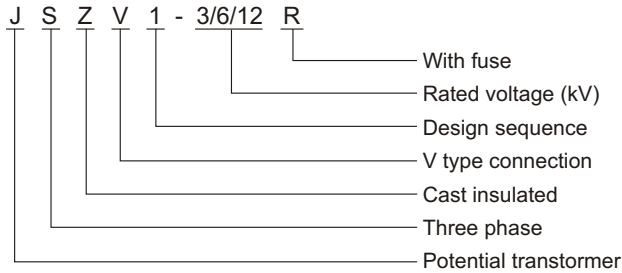
## JSZV1-3/6/12R Voltage Transformer

### Summary

The potential transformers are casting resin insulated, fully enclosed products. It is used for metering electric energy, voltage control and relay protection in the electric system up to rated frequency 50Hz or 60Hz and rated voltage 3kV, 6kV and 12kV. The transformers can be executed according to the standards IEC60044-2 and GB1207-2006.



### Model



### Structure feature

This potential transformer is a new product that the primary winding is carried with fusible cutout protection, It is casting resin insulated and fully inclosed type. The fusible cutout is the primary winding's terminal, The fusible cutout's fused current can match the transformer's short-circuit force. The secondary winding offering the 100/110V voltage is used form easuring and power supply to operation machine.

### Summary

Technical data of the potential transformer for measuring

Table 1

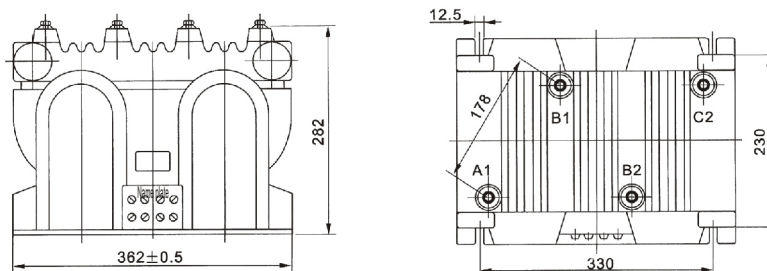
Type	Rated voltage ratio(V)	Rated output(VA)		Limit output (VA)	Rated insulated level(kV)
		0.2	0.5		
JSZV1-3R	3000/100	30	80	800	3.6/25/40
JSZV1-6R	6000/100				7.2/32/60
JSZV1-12R	10000/100				12/42/5

Technical data of the potential transformer for the operating power supply of circuit breaker.

Table 2

Type	Rated voltage ratio(V)	Max.short-time output rating(VA)	Rated insulated level(kV)
JSZV1-3R	3000/100/110/220	1000	3.6/25/40
JSZV1-6R	6000/100/110/220		7.2/32/60
JSZV1-12R	10000/100/110/220		12/42/75

### Outline dimension



JSZV1-12R Outline Dimension