

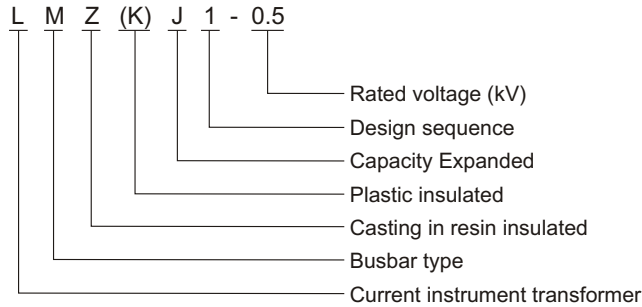
LMZ(K)J1-0.5 Current Transformer

Summary

The current instrument transformers LMZ(K)J1-0.5 are designed for electric power systems of 50/60Hz rated frequency and rated voltage 0.5kV. They are used for indoor mounting. The performances of the products meet standards IEC60044-1 and GB1208-2006. The products are used in metering electric energy, voltage controlling and relay protection applications.



Model



Technical specification

1. Rated secondary current: 5A or 1A.
2. The following table shows standard values for this model.
3. The product may be custom manufactured to non-standard specifications.

Type	Rated primary current(A)	Primary ampere-turn	Rated output (VA)				
			0.2S	0.5S	0.2	0.5	10P6
LMZ1-0.5	5,10,15,30,75,150	150	0.2S	0.5S	0.2	0.5	10P6
	20,40,100,200	200	5	5	5	5	5
	300,400	300,400					
LMZJ1-0.5	5,10,15,30,50,75,150	150	5	5	10	10	10
	20,40,100,200	200					
	300~800	300~800	10	15	15	20	15
	1000~3000	1000~3000					

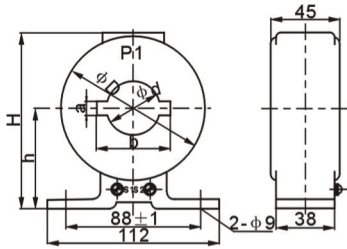
LMK1-0.5(5~600/5)

Rated primary current	Primary ampere-turn	Rated output (VA)		
		0.2	0.5	1
5,10,15,30,75,150	150	5	10	1
20,40,100,200	200			
300	300			
400	400			
500	500			
600	600			

Structure feature

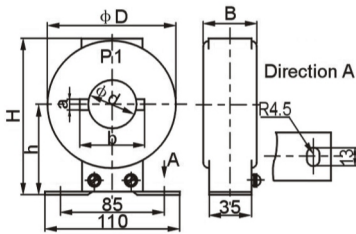
The transformers are of linear-cast type or plastic shell type. Two screws are located on base plate for installation and fixing purpose. And the internal pole of core is used for busbar to cross through.

Outline dimension



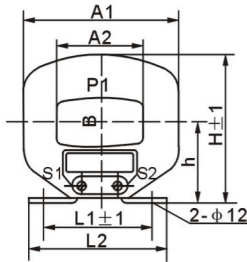
LMK1-0.5(5-600/5)

Rated primary current(A)	ϕD	ϕd	h	H	a	B
5~300	94	35	69	116		
400~600	114	40	83	140	9	54



LMZ(J)-0.5(5-600/5)

Type	Rated primary current(A)	ϕD	ϕd	H	h	B	a	b
LMZ1-0.5	5~300	94	30	119	69	42	-	-
	400	106	45	130	74	44	-	-
	500~600		40				9	53
LMZJ1-0.5	5~300	106	30				130	74
	400~600		40	9	53			



LMZJ1-0.5(800-3000/5)

Rated primary current(A)	A1	A2	H	h	B	L1	L2	C
800~1500	174	102	153	91	50	120	143	42
2000~3000	234	154	175	102	70	152	175	45